



CONNECT Beyond

# Advancing the Plan Committee

## Committee Overview

### What is CONNECT Beyond?

CONNECT Beyond is a **bold regional transit vision** and plan that provides **real mobility solutions** and **opportunities for residents and visitors** across the greater Charlotte region. The plan was adopted by its lead sponsors, Centralina Regional Council and Metropolitan Transportation Commission and all North Carolina transportation planning organizations in the region. Project efforts now are focused on implementing the plan's 120+ recommendations.

### Advancing the Plan Committee

This committee, an official subcommittee of Centralina's Board, is dedicated to guiding the CONNECT Beyond plan in the Greater Charlotte region. Their role includes fostering regional discussions and actions and strengthening partnerships.

### The Advancing the Plan Committee met throughout in 2023 and focused on:

1

Exploring short-term regional collaboration and **developing a regional governance strategy.**

2

Supporting and implement a **regional communication framework** for CONNECT Beyond.

3

Educating state lawmakers about CONNECT Beyond and push for **regional funding initiatives.**

### Benefits of Regional Collaboration:



Boosts economic competitiveness



Increases investment and local input



Enhances regional services and connections



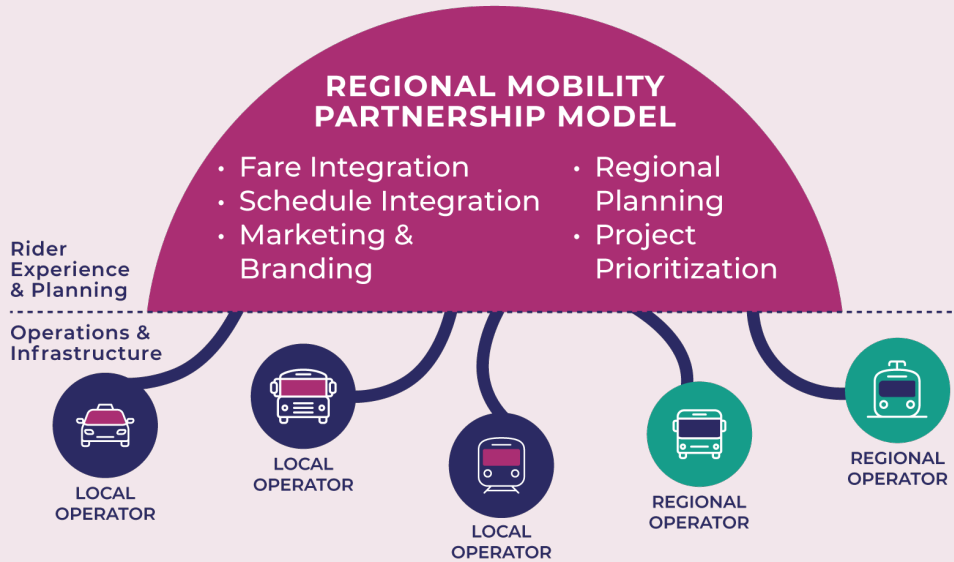
Improves access and efficiency for travelers



Enhances equity

# Regional Mobility Partnership Model

A Regional Mobility Partnership Model was identified as the best approach for coordinating regional mobility, focusing on collaborative transit planning and enhanced rider experience, with local agencies overseeing daily operations and infrastructure.



## 2024 Committee Goals

### Committee Engagement:

- Members will engage their jurisdictions to develop support and seek local input on the model's approach.
- The Project Team will continue to brief the Centralina Board on the Committee's work and future plans.

### Committee Work:

- The Committee will be developing the governance structure and possible funding strategies for the partnership model.

## Advantages of a Regionally Coordinated Model:

- Increase **regional connectivity** and greater access for riders
- Increase **economic impact** of connecting to jobs and housing
- Maximize **funding opportunities**
- Increase **human services efficiencies** through cost sharing
- Maintain **local control** and build trust

## 2024 Committee Members

### Mayor Darrell Hinnant

Co-Chair, City of Kannapolis, Centralina Board

### Mayor Vi Lyles

Co-Chair, City of Charlotte

### Mayor Karen Alexander

City of Salisbury, Centralina Board

### Commissioner Leigh Altman

Mecklenburg County

### Mayor Melinda Bales

Town of Huntersville, MTC

### Dena Diorio

Mecklenburg County

### Mike Downs

Cabarrus County

### Kim Eagle

Gaston County

### Councilmember Tommy Green

Town of Boiling Springs, GCLMPO Vice-Chair

### Commissioner Brian Helms

Union County, Centralina Board

### Commissioner Bob Hovis

Gaston County, Centralina Board

### Marcus Jones

City of Charlotte

### Mayor Rusty Knox

Town of Davidson, MTC

### Janet LaBar

Charlotte Regional Business Alliance

### Tony Lathrop

NC Board of Transportation

### Andy Lucas

Stanly County

### Pat Mumford

Gaston Business Association

### Lloyd Payne

City of Concord

### Commissioner Lisa Qualls

Town of Mooresville, CRTPO Chair

### David Rhew

NC Public Transportation Association

### Commissioner Lynn Shue

Cabarrus County, Centralina Board

### Councilmember Jennifer Stepp

City of Gastonia, Centralina Board

### Mayor Woody Washam

Town of Cornelius, MTC

### Commissioner Jarvis Woodburn

Anson County, Centralina Board

### 2023 Members

### Mayor Melinda Bales

Town of Huntersville, MTC

### Mayor Scott Neisler

Kings Mountain, GCLMPO Chair

### Mayor Ron Pappas

Town of Waxhaw, CRTPO Chair